



USER MANUAL – EN

IN 185 Indoor Exercise Bike inSPORTline Kapara



OBSAH

OBSAH.....	2
INSTRUCTION USE.....	2
MAINTENANCE	3
ASSEMBLY	4
PARTS LIST	6

INSTRUCTION USE

- 1) This model is designed to be used as a exercise cycle in fitness studios and health clubs. It has a fixed wheel driven flywheel and should only be used under professional supervision.
- 2) Installation – it is important that the device is correctly assembled and we recommend that suitably qualified personnel carry out installation and assembly.
- 3) **Handlebar and seat adjustment.** It is important that the handlebar and seat are set at the correct height for your body. Ask your instructor for assistance. Adjusting the handlebar height- Undo the knob that is located where the handlebar post fits into the frame. Slide the handlebar post up or down to the required height and retighten the knob. Make sure it is securely tightened and that there is no lateral or vertical movement of the handlebar. The handlebar position can also be adjusted forwards or backwards. Undo the Release lever located below the handlebar slider. Slide the handlebar assembly forwards until you reach the required position. Then securely re-tighten the Release lever.
Adjusting the seat height- undo the knob located where the seat post fits into the frame. Adjust the seat to the required height. Then retighten the knob. Make sure it is tight enough to prevent the seat from twisting side to side. The seat position can be adjusted forwards and backwards. Undo the knob located directly side of the seat slider. Loosen the knob then slide the seat to the required position. Then make sure the knob retighten.
- 4) **Pedals and toe straps-** your feet should be securely positioned in the toe clips during the exercise. Put your foot as far forwards as you can into the toe-clip and then pull the strap tight.
- 5) The device should operate on a level surface with no lateral movement. There is height adjuster caps located on either side underneath the rear foot. Turn these caps clockwise or anti-clockwise until the bike is totally stable on the ground.
- 6) **Emergency brake** – Press down brake system (31) for stop.
- 7) **Maintenance** – It may be unsafe when loosen bolt on the parts or noise on the flywheel, please contact your supplier. Like any other mechanical cycling device, this model should be regularly maintained. Ask your supplier for a detailed maintenance program.
- 8) Class - HC (according to EN ISO 20957) for home use.
- 9) User weight should not exceed 110 kg.
- 10) **WARNING!** A system for monitoring heart rate may not be accurate. Overloading during training may cause serious injury or death. If you feel any discomfort, immediately stop the exercise!

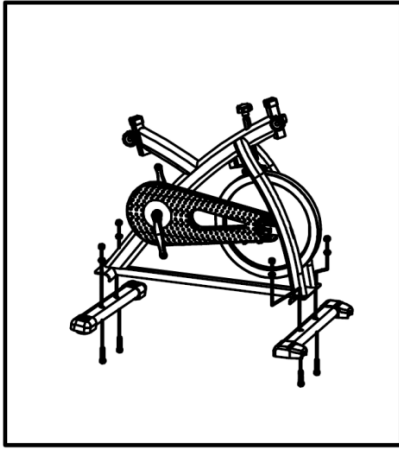
MAINTENANCE

No	DESCRIPTION	Daily	Weekly	Monthly	Quarterly	Annually
1.	Wipe machine down	X				
2.	Spray with WD40 or similar	X				
3.	Visual check	X				
4.	Check security of handle bar post & seat post	X				
5.	Check security of saddle	X				
6.	Remove handlebar post and clean tube		X			
7.	Remove seat and clean tube		X			
8.	Check brake pads for wear-align		X			
9.	Check brake adjustment		X			
10.	Check security of all knobs & release lever		X			
11.	Check toe straps for signs of wear		X			
12.	Check crank bolts and re-tighten		X			
13.	Make sure pedals are screwed in		X			
14.	Check chain tension			X		
15.	Oil chain			X		
16.	Wipe the anti-rust oil on the flywheel			X		
17.	Check bottom bracket				X	
18.	Check flywheel bearings				X	
19.	Full service-frame inspection					X

ASSEMBLY

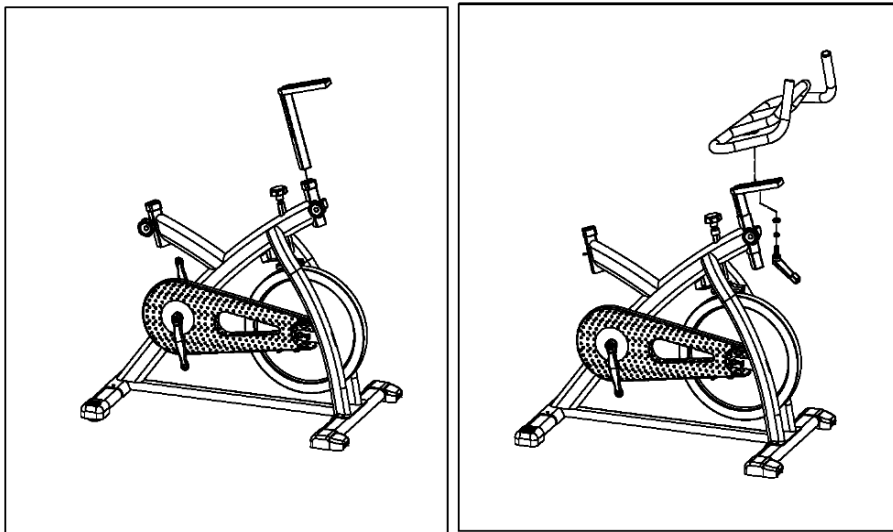
Step one

Attach the front (13) and rear feet (12) to the frame using the nuts (8), washer (9) and bolts (10).



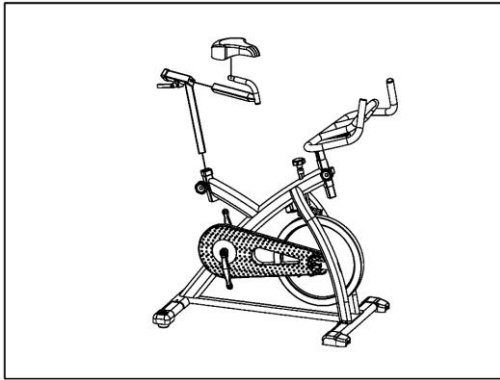
Step two

Attach the handlebar post inserting into the head tube on the frame. Using knob to adjust and tighten the height in proper position. Then attached handlebar slider (21) on the handlebar post (23), use release lever (22) to adjust and tighten the handlebar in proper position.



Step three

Insert the seat post into the frame's seat tube. Attach the saddle (1) into seat slider and tighten the screw of saddle. Insert the seat slider into the seat post and fix. Using knob (4) adjusts and tightens the height in proper position.



Step four

Attach the pedals (11) into the crank arms (7)(5), each pedal is marked with the L (left) or R (right) to denote the side of the exercise bike they are on, Note- the right hand crank is on the same side as the chain guard (24). Be careful to align the threads correctly to avoid any damage. A little grease on the threads should help the pedals to screw in easily and correctly, tighten using a 15mm spanner; both pedals threads should tighten towards the front of the exercise bike.

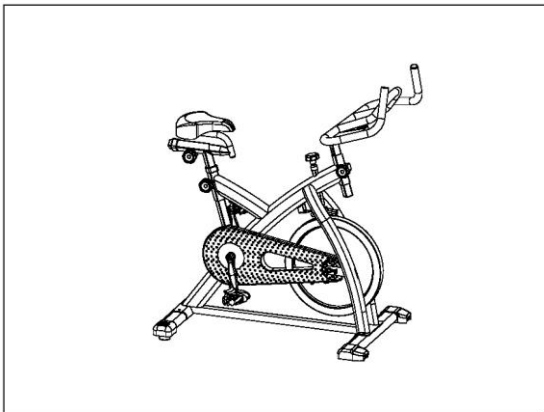


Adjusting the resistance

To adjust the exercising resistance on the complete exercise bike by the brake knob (31) of brake system, and then simply loosen (-) or tighten (+).

The flywheel should rotate freely without resistance when you loosen (-) the brake system totally.

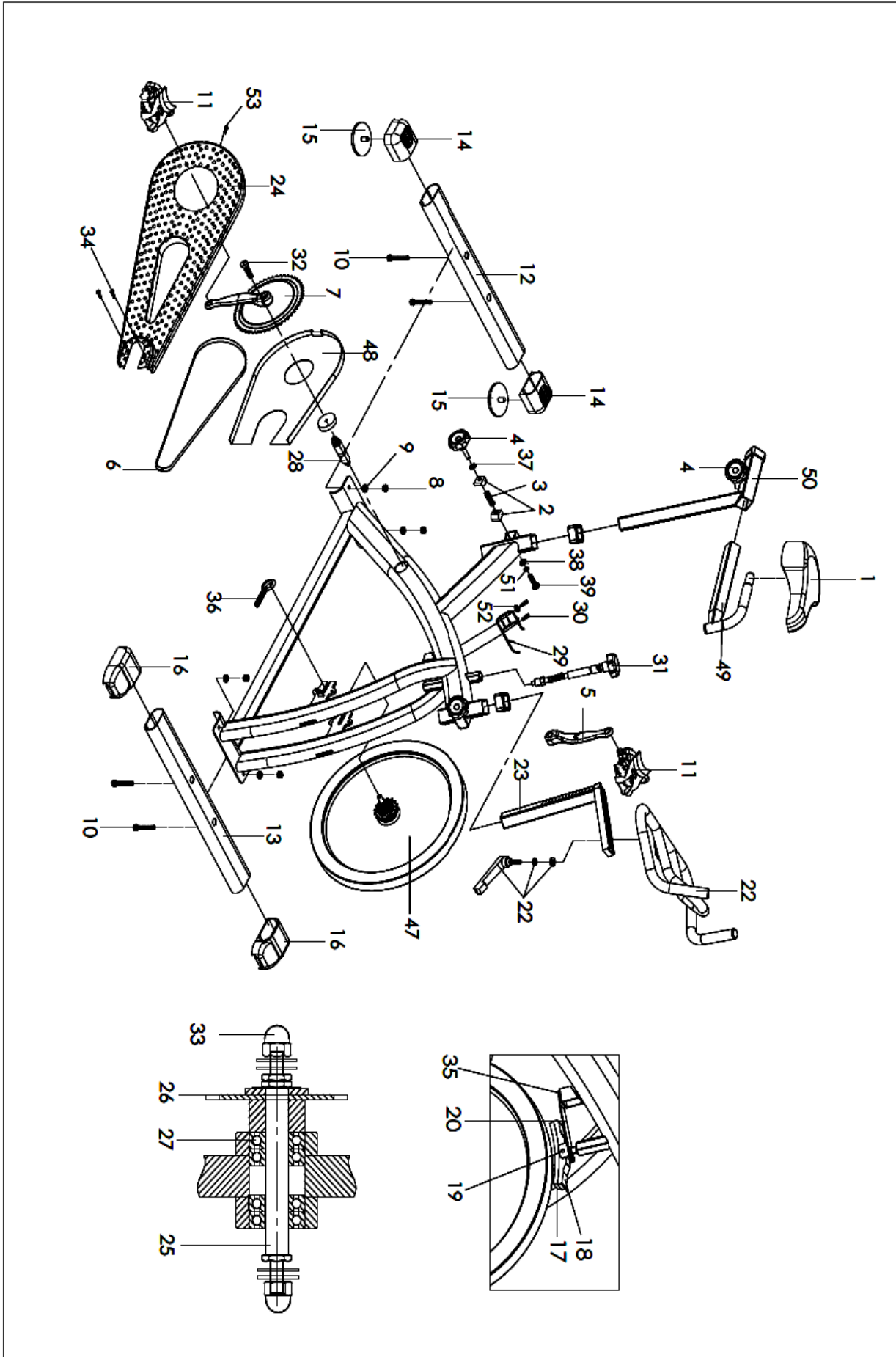
More experienced riders may wish to increase the overall resistance by tighten (+) the brake system totally.



PARTS LIST

No.	Name	Unit	No.	Name	Unit
1	Saddle	PC	28	BB axle set	PC
2	Alloy bind clamp (R/L)	PC	29	Bottle cage	PC
3	Knob spring	PC	30	Screw for bottle cage	PC
4	Knob	PC	31	Brake system	SET
5	Left crank arm	PC	32	Crank bolt	PC
6	Chain	PC	33	Flywheel security nut	PC
7	Right crank	PC	34	Outer chain guard bolt (M6)	PC
8	Foot tube nut	PC	35	Bolt and washer for spring bracket	PC
9	Foot tube washer	PC	36	Flywheel adjuster bolt	PC
10	Foot fixing bolt	PC	37	Knob washer	PC
11	Pedal	PR	38	Knob plastic washer	PC
12	Rear foot tube	PC	39	Knob fixed bolt	PC
13	Front foot tube	PC	40	Bottle	PC
14	Rear foot end cap	PR	47	Flywheel	PC
15	Rear foot adjuster wheel		48	Inner chain guard	PC
16	Front foot tube end cap	PC	49	Seat slider	PC
17	Brake pad	PC	50	Seat post	PC
18	Brake pad holder	PC	51	Knob fixed washer	PC
19	Screw & nut	PC	52	Washer for bottle cage	PC
20	Spring bracket	PC			
21	Handlebar	PC			
22	Release lever w/washer	PC			
23	Handle bar post	PC			
24	Outer chain guard	PC			
25	Flywheel axle	PR			
26	Fixed wheel sprocket				
27	Flywheel bearing				

EXPLODED DRAWING





SEVEN SPORT s.r.o.

Sídlo: Bořivojova 35/878, 130 00, Praha 3, ČR
Centrála: Dělnická 957, 749 01 Vítkov
Reklamace a servis: Čermenská 486, 749 01 Vítkov

IČO: 26847264
DIČ: CZ26847264
Telefon: +420 556 300 970
Mail: eshop@insportline.cz
reklamace@insportline.cz
servis@insportline.cz
Web: www.insportline.cz

SK

inSPORTline s.r.o.

Centrála, reklamácie, servis: Električná 6471, 911 01 Trenčín, SK

IČO: 36311723
DIČ: SK2020177082
Telefón: +421(0)326 526 701
Mail: objednavky@insportline.sk
reklamacie@insportline.sk
servis@insportline.sk
Web: www.insportline.sk